

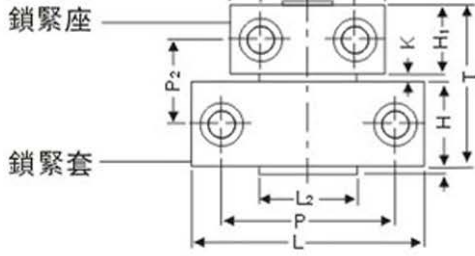


碟形彈簧，內部滾輪以及卡輪的組合，能使模具的開合具有良好的平衡性。滾輪的旋轉能較好的防止偏心磨損的發生。鎖緊套為上下對稱式，所以若有磨損也可倒置安裝以再次使用。因為鎖緊座的背面有避空位，所以模闔上有台階時也可以使用。

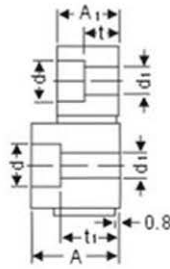
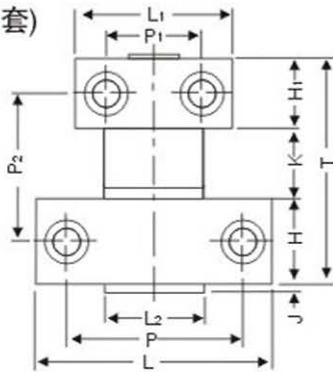
Disc spring, and a combination of internal roller card wheel, can make the opening and closing of the mould has good balance. Wheel rotation can better prevent eccentric wear occurs. The locking sleeve is symmetric, so if the wear can also be installed to use again. Because the back of the locking seat is avoiding vacancy, can also use so the template has the steps.

材質：SK3(套)+S50C(座)

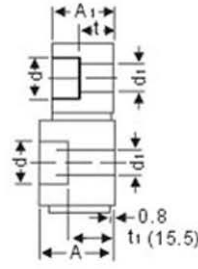
MPLK (標準型鎖緊套)



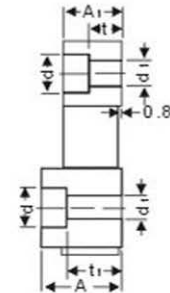
MPLKS (緊貼型鎖緊套)



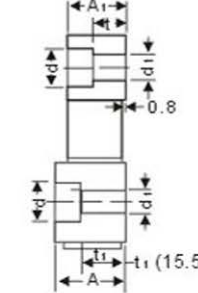
MPLK



MPLKS

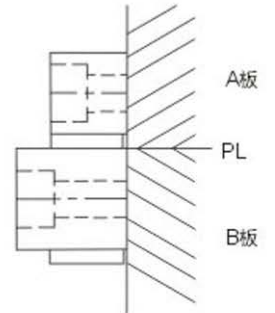
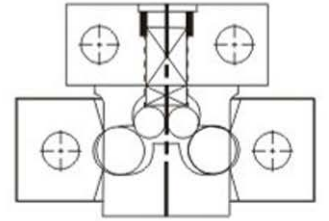


MPLK80



MPLKS80

● 安裝示意圖
Installation diagram



標準型:

Type	尺寸 Size																	拉力(kgf) 1套(常溫 狀態)	
	L	L1	L2	T	H	H1	J	K	P	P1	P2	A	A1	t	t1	d	d1		
MPLK (標準型鎖 緊套)	10	48	36	25	42	22	18	2	2	36	24	22	24	16	9.5	18	11	6.5	50
	20	54	42							40	28				9	16			100
	30	65	46	35	48.5	25	20	3.5	3.5	50	31	26	27	19	9.5	17	14	9	150
	60	73	50							52	33								34
	80S									56.5	11.5								
100	103	65	48	58	30	24	4	4	76	42	31	34	25	13	19	17	11	500	
MPLKS (緊貼型鎖 緊套)	30	65	46	35	48.5	25	20	35	3.5	50	31	26	24	19	9.5	15.5	11	7	150
	60	73	50							52	33								34
	80S			56.5	11.5														400

加長型:

Type	尺寸 Size																	拉力(kgf)	
	L	L1	L2	T	H	H1	J	K	P	P1	P2	A	A1	t	t1	d	d1		
MPLK (標準型鎖 緊套)	60	73	50	35	87.5	25	20	3.5	42.5	52	33	65	27	19	9.5	17	14	9	400
MPLKS (緊貼型鎖 緊套)													24						

● Order: [Type No.] x [Pcs]

MPLK X 10