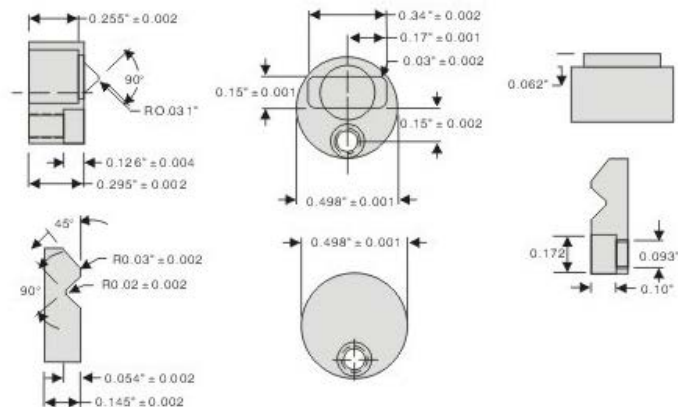


限位夾 SLIDE RETAINERS [筒体]



JHN26標準限位夾的設計，能有效的預防模座滑塊逐漸松動的問題。此款限位夾外形小巧，合理的利用了有效的空間。

The design of JHN26 standard locating clamps can prevent mold base's slide and loose effectively. It's small but utilize space soundly.

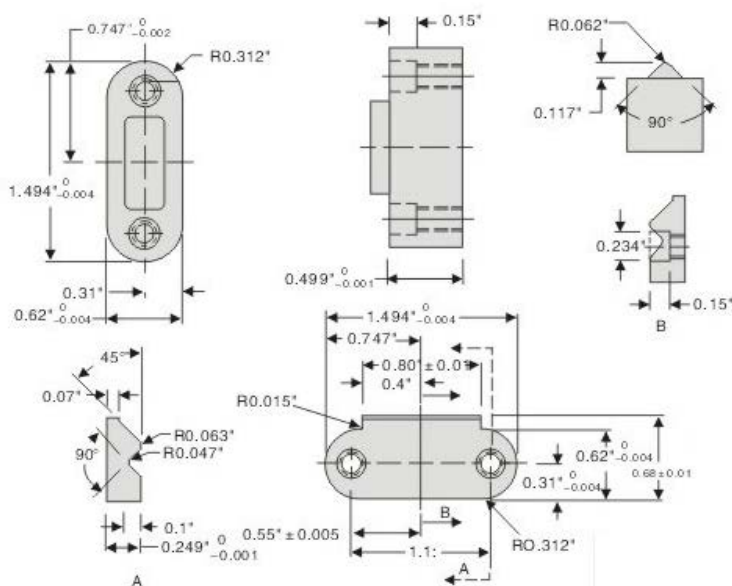
Material M材質	Hardness 硬度
SKH-51	HRC59°~61°

Type	荷重 load(kgf)
JNH26	3.6kgf

2D下載

3D下載

返回索引



JHN27容易安裝進入模座滑塊中，巧妙的隱藏在限位裝置中

JHN27 is easy to install in the mold

Material M材質	Hardness 硬度
SKH-51	HRC59°~61°

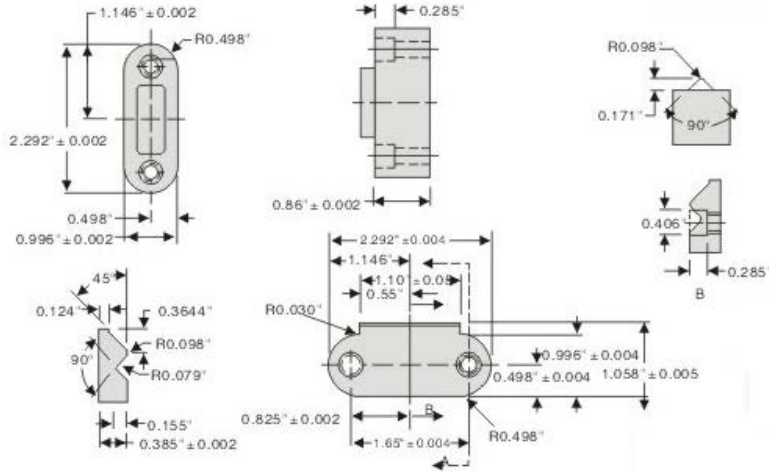
the locating sets.

Type	荷重 load(kgf)
JNH27	11.25kgf

2D下載

3D下載

返回索引



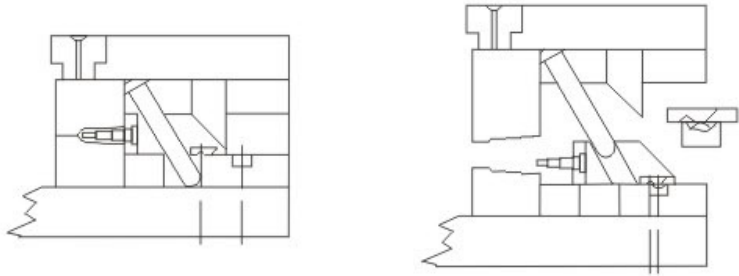
JNH28完美的應用於壓鑄模具中，多個限位夾容易加工安裝在模具中，以達到更大的荷重。

JNH28 apply to injection mold perfectly, it's easy to install many locating clamps in mold, to achieve more load.

Material M材質	Hardness 硬度
SKH-51	HRC59°~61°

Type	荷重 load(kgf)
JNH28	22.5kgf

Example
使用例



2D下載

3D下載

返回索引